

Ph: 07 4659 0044

500 Boundary Street, Toowoomba QLD 4350

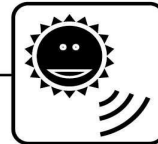
E: sales@tweld.com.au | www.tweld.com.au

## We deliver on time ... *EVERYTIME*

We are an Australian locally owned family business



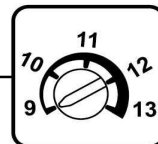
### Auto Darkening Welding Helmet WH800S Series



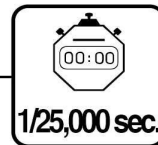
**Solar Cell  
Battery  
Replaceable**



**97x62mm  
View Size**



**Shade 9-13**



**1/25,000 s.  
From Light  
To Dark**



**Very Light  
Weight**



**Guaranteed  
Service**



CWH800.BK  
CWH800S Black



CWH800.AU  
CWH800S Aussie



WH800.SK  
WH800S Skull



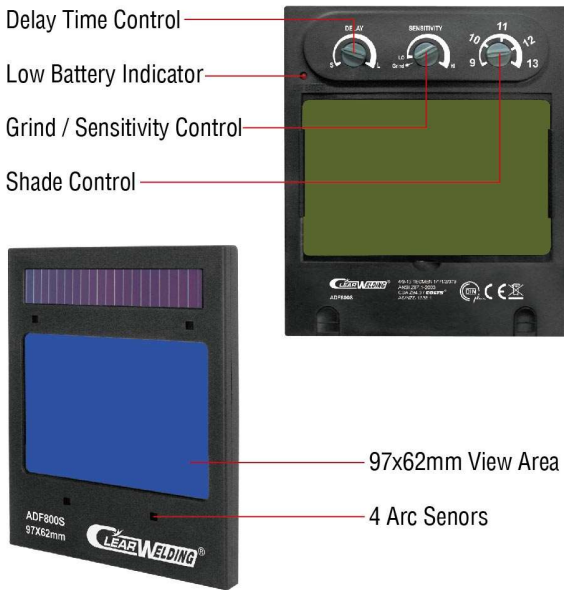
# Auto Darkening Welding Helmet

WH800S Series



## Specifications

Specification	ADF800S
Optical Class:	1 / 1 / 1 / 2
Viewing Area:	97x62 mm (3.82"x2.44")
Cartridge Size:	133x114x9 mm (5.25"x4.50"x0.35")
Arc Sensor:	4
Light State:	DIN 3.5
Dark State:	Variable Shade 9 ~ 13
Shade Control:	Internal, Variable Shade
Power On/Off:	Automatic On / Off
Sensitivity Control:	Low — High, by infinitely dial knob
UV/IR Protection:	Up to Shade DIN16 at all times
Power Supply:	Solar cell. Battery replaceable, 2 x CR2450 lithium battery
Switching Time:	1/25,000 s. from Light to Dark
Delay (Dark to Light):	0.1 ~ 1.0 s by infinitely dial knob
Low Amperage TIG Rated:	≥ 2 amps (DC); ≥ 2 amps (AC)
Grinding:	Yes
Operating Temp.:	-10 °C ~ +55 °C (14 °F ~ 131 °F)
Storing Temp.:	-20 °C ~ +70 °C (-4 °F ~ 158 °F)
Helmet Material:	High Impact Resistance Nylon
Total Weight:	490 g
Approved:	DINplus, CE, ANSI Z87.1, CSA Z94.3, AS/NZS 1338.1



### ↳ Magnifier Lens Holder



### ↳ High Impact Resistance



### ↳ Clear View



## ADF Feature Table

Welding Method	Stick Welding (SMAW)	TIG DC&AC	TIG Pulse DC	TIG Pulse AC	MIG/MAG/CO2	MIG/MAG Pulse	Plasma Arc Cutting (PAC)	Plasma Arc Welding (PAW)	Air Carbon Arc Cutting (CAC-A)	Oxyfuel Gas Welding (OFW)	Oxygen Cutting (OC)	Grinding
Model No. ADF800S	✓	✓	✓	✓	✓	✓	✓	✓	✓	×	×	✓

## Spare Parts

No	Part No.	Description
1	CL13311415	Outer Lens P5
2	CL966510	Inner Lens P5
3	WH820.13	Headgear Assembly
N/S	WH820.14	Sweatband P2
N/S	WH820.16	Battery CR2450
4	WH820.19	Hard Hat Attachment
5	WHBAG	Helmet Carry Bag
N/S	WH820.17	Rubber Frame for Lens
N/S	WH820.18	Lens Holder
6	WLMAG100	Magnifier Lens x 1.0
6	WLMAG150	Magnifier Lens x 1.5
6	WLMAG200	Magnifier Lens x 2.0
6	WLMAG250	Magnifier Lens x 2.5



1



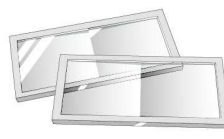
2



3



4



5



6

