



CleanSpace™
wearable protective masks

CLEANSPACE ULTRA

FOR DECONTAMINATION SHOWERS. RATING IP 66



REVOLUTIONARY
RESPIRATORY
PROTECTION



WORK EFFORTLESSLY & COMFORTABLY OVER LONG PERIODS WITH P3 PROTECTION



CLEANSPACE™ ULTRA

Powered P3 respirator
with Rating IP 66 designed for
use in decontamination showers

- Chemical handling
- Lead abatement
- Infectious agents
- First responder

SAFE Fully certified positive pressure respirator with P3 TM3 filtration efficiency ensuring maximum protection in the workplace. Breath responsive. Up to 8 hours run time. Portacount testing enabled.

WEARABLE Easy to wear; Effortless and comfortable. No hoses or heavy waist mounted battery packs. Award winning lightweight design (500g) delivers clean fresh air for a full shift.

SMART Tough, reliable, cost effective; no servicing or maintenance and easy to clean; A simple one-button system; CleanSpace compact design provides compatibility with other PPE.



WORK EFFORTLESSLY AND COMFORTABLY WITH 99.97% PROTECTION

CleanSpace is the only choice in protective masks due to its wearability, comfort and one-button simplicity. Now the choice in respiratory safety in over 20 countries.

FREE ONLINE TRAINING

CLEANSPACE™ ULTRA PRODUCT RANGE

POWER UNIT

PAF-0070
CLEANSPACE ULTRA



HEAD HARNESS
(INCLUDED)



FACE MASKS



PAF-0033
SMALL



PAF-1010
MEDIUM



PAF-0027
LARGE



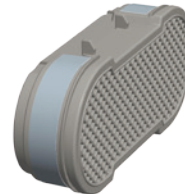
PAF-1014
FULL FACE

All CleanSpace masks can be portacount tested using the portacounter adaptors: PAF-0025 (half mask) and PAF-1015 (full face). Half Mask fit testing kits are available (PAF-0039)

FILTERS



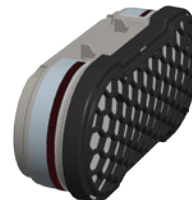
PAF-0038
FILTER ADAPTOR



PAF-0037
HI CAPACITY (HI CAP)
PARTICULATE FILTER
P3 HEPA



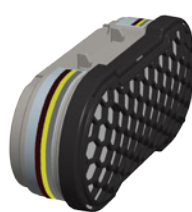
PAF-0035
EN12942 TM3P HEPA
PARTICULATE FILTER
(PACK OF 3)



PAF-0046(AU) / PAF-0050(EU)
COMBINED: ORGANIC GAS
& VAPOUR + PARTICULATE
A1P3 P SL R



PAF-0036
PRE-FILTER
(PACK OF 10)



PAF-0091(AU) / PAF-0051(EU)
COMBINED: ORGANIC,
INORGANIC & ACID GAS &
VAPOUR + PARTICULATE
ABE1P3 P SL R



FREE ONLINE TRAINING

FIND THE RIGHT **CLEANSPACE FILTER**

This table is a guide to assist filter selection based in your applications.¹

A user should refer to the Material Data Safety Sheet (MSDS) and establish the concentration before selecting a filter.

INDUSTRY	APPLICATION	HAZARD	FILTER TYPE	CLEANSPACE FILTER	MATCHING PRE-FILTER
Metal-working	Cutting/grinding/drilling: of metals or rust	Metallic powder, rust powder	<input type="checkbox"/> P3	PAF-0035	PAF-0036
	Cutting with laser beam (plasma)	Metallic powder	<input type="checkbox"/> P3	PAF-0035	PAF-0036
	Cutting with laser beam with limited ventilation (plasma)	Metallic powder	SUPPLIED AIR	N/A	
	Soldering (without presence of soldering paste)	Smoke particles	<input type="checkbox"/> P3	PAF-0035	PAF-0036
	Welding Aluminium - MIG, TIG, STICK WELDING (good environment with forced ventilation)	Aluminium oxide, smoke, ozone	<input type="checkbox"/> HI-CAPACITY P3	PAF-0037 ²	
	Welding Aluminium - MIG, TIG, STICK WELDING (limited ventilation ³)	Aluminium oxide, smoke, ozone	<input checked="" type="checkbox"/> ABE1P3	PAF-0091 ²	
	Welding Steel - MIG, TIG, STICK WELDING	Metallic powder, metal oxide smoke	<input type="checkbox"/> HI-CAPACITY P3	PAF-0037 ²	
	Welding Galvanised Steel - MIG, TIG, STICK WELDING	Metallic powder, metal oxide smoke	<input type="checkbox"/> HI-CAPACITY P3	PAF-0037 ²	
	Welding Stainless Steel - MIG, TIG, STICK WELDING (good environment with forced ventilation)	Metallic powder, metal oxide smoke	<input type="checkbox"/> HI-CAPACITY P3	PAF-0037 ²	
	Welding Stainless Steel - MIG, TIG, STICK WELDING (limited ventilation ³)	Metallic powder, metal oxide smoke	<input checked="" type="checkbox"/> ABE1P3	PAF-0091 ²	
Wood-working	Paint removal via sanding, brushing (including coatings containing chromium)	Fine paint particles	<input type="checkbox"/> P3	PAF-0035	PAF-0036
	Adhesives Removal via scraping/sanding (such as polyester resin)	Fine particles	<input type="checkbox"/> P3	PAF-0035	PAF-0036
	Cutting/planning/drilling: wood including beechwood and oak	Wood dust particles	<input type="checkbox"/> P3	PAF-0035	PAF-0036
	Paint removal via stripping off using solvent based agents	Solvent vapour	<input checked="" type="checkbox"/> A1P3	PAF-0046 ²	
	Gluing using solvent based substances (including spray adhesives, eg. Polyester resin or epoxy resin)	Adhesive mists and solvent vapours	<input checked="" type="checkbox"/> A1P3	PAF-0046 ²	
	Paint removal via flame cleaning of old coats of paint	Gases, vapours, smoke, fine particles	<input checked="" type="checkbox"/> ABE1P3	PAF-0091 ²	
	Paintwork	Cutting/sanding/drilling: paint, lacquers and anti corrosion paint (containing chromium)	Fine paint particles	<input type="checkbox"/> P3	PAF-0035
Cutting/sanding/drilling: of anti-fouling lacquers		Fine paint particles	<input checked="" type="checkbox"/> A1P3	PAF-0046 ²	
Spraying/varnishing with Latex Paint		Paint particles	<input type="checkbox"/> P3	PAF-0035	PAF-0036
Powder coating		Fine paint particles	<input type="checkbox"/> HI-CAPACITY P3	PAF-0037 ²	
Spraying/varnishing with water soluble paint		Fine paint particles	<input checked="" type="checkbox"/> A1P3	PAF-0046 ²	
Spraying/varnishing with solvent based paint, synthetic laquer and bleaching agents		Solvent vapour and mist	<input checked="" type="checkbox"/> A1P3	PAF-0046 ²	
Spraying/varnishing with Latex Paint with the presence of residual solvents or odours		Solvent vapour and paint particles	<input checked="" type="checkbox"/> A1P3	PAF-0046 ²	
Spraying/varnishing of isocyanates		Solvent vapour and paint particles	SUPPLIED AIR	N/A	
Spraying/varnishing with laquers and wood preservatives		Organic vapours	<input checked="" type="checkbox"/> A1P3	PAF-0046 ²	
Fibreglass		Mixing and Laying up	Epoxy and polyester resin, amine and anhydride hardener. Methyl ethyl ketine peroxide (MEKP), styrene vapour	<input checked="" type="checkbox"/> A1P3	PAF-0046 ²
	Using a chopper gun	Glass fibre, dust resin and styrene vapour	<input checked="" type="checkbox"/> A1P3	PAF-0046 ²	
	Spray painting and cleaning moulds	Organic vapour and mist	<input checked="" type="checkbox"/> A1P3	PAF-0046 ²	
Maintenance	Disinfection and cleaning	Organic vapour, mist, dust	<input checked="" type="checkbox"/> A1P3	PAF-0046 ²	
	Disinfection and cleaning (agents containing acids)	Acids	<input checked="" type="checkbox"/> ABE1P3	PAF-0091 ²	
	Disinfection and cleaning (agents containing aldehydes)	Organic vapour, inorganic vapour, formaldehyde, mist, dust	<input checked="" type="checkbox"/> ABE1P3	PAF-0091 ²	
Construction	Cutting/sanding/grinding/drilling/plastering/casting: Concrete, cement, stone, brickwork	Concrete dust, stone powder, fine plaster dust	<input type="checkbox"/> P3	PAF-0035	PAF-0036
	Processing of glass fibre and mineral fiber (e.g. roof insulation)	Dust particles and fibres	<input type="checkbox"/> P3	PAF-0035	PAF-0036
	Painting, Spraying, Varnishing, coating	Solvent-based paint, solvents, resins, latex-paint, spray-on-glue, foam, varnish, adhesives	<input checked="" type="checkbox"/> A1P3	PAF-0046 ²	
Agriculture	Sweeping: Barns, coops, pens. Cleaning animal feed systems	Dust particles	<input type="checkbox"/> P3	PAF-0035	PAF-0036
	Mixing/spraying: Pesticide, fungicides, herbicides or organic vapours	Organic vapour, mist, dust	<input checked="" type="checkbox"/> A1P3	PAF-0046 ²	
	Handling Liquid Manure	Gases and vapours	<input checked="" type="checkbox"/> A1P3	PAF-0046 ²	

1) PAFtec accepts no liability for incorrect choice of respiratory protective equipment. This chart is only an outline. It is designed to assist in the selection of the most appropriate filter for particular applications. It should not be used as the only means of selecting respirator/filter combination. This guide does not release the user from the obligation to comply with national application regulations and laws and is not a substitute for adhering to and understanding the product instruction manuals. 2) Requires Filter Adaptor PAF-0038. 3) Filtering respiratory protection devices should not be used in poorly ventilated areas or confined spaces, such as tanks, small rooms, tunnels or vessels. CleanSpace should not be used in oxygen deficient or oxygen enriched atmospheres. The CleanSpace EX is suitable for use in certain ignitable or potentially explosive atmospheres where there is a risk of explosion.
 ABN 21 060 672 979

TOOWOOMBA WELDING SUPPLIES

Ph: 07 4659 0044
 500 Boundary Street, Toowoomba QLD 4350
 E: sales@tweld.com.au | www.tweld.com.au

We deliver on time ... **EVERYTIME**

We are an Australian locally owned family business