

Lincoln Electric®

Ranger® 250 GXT

ADVANTAGE

► Totally enclosed case

- Engine is fully protected.
- 3 service access doors.
- Low Noise – 76.4 dBA sound level at 7m. 100.7 dB sound power (Lwa) at rated output.

► Versatile AC/DC welding

- AC/DC welding output for a broad range of stick electrode types.
- Excellent AC TIG welding with optional TIG module for aluminium and other alloy welding.
- MIG and Flux-Cored capable (with optional equipment).
- Remote ready! 6-pin connector and local/remote switch for remote control operation.

► 7,200 Watts single-phase AC generator power

- Peak for motor starting.
- 7,200 watts continuous power for generator, plasma cutter or inverter welder
- Power lights, grinder, power tools

► 23 HP Kohler® petrol engine

- 2 cylinder, 4 cycle overhead valve air-cooled design.
- Electric fuel pump avoids vapour lock.
- Oil drain extension for easy oil changes.
- 45 Litre tank for extended run times.
- Electric fuel gauge located on control panel makes it easy to check the fuel level during operation and refueling.

► Rugged reliability

- Welding and AC Generator Outputs Rated at 40°C.

Input



Output



DESIGNED AND ENGINEERED FOR DURABILITY & RELIABILITY

XTra Performance! XTra Power! XTra Protection!

Get all of the XTras needed for construction, maintenance and repair work or getting projects done on rural properties. That's XTra welding performance with 250 amps for AC or DC stick and DC wire welding and XTra power with up to 7,200 watts of power for lights, grinders or high amperage equipment. You also get XTra protection and quiet operation with the Lincoln enclosed case.

Order

K2923-1 Ranger ® 250 GXT

Processes

Stick, TIG, MIG, Flux-cored and Gouging

TECHNICAL SPECIFICATIONS

| Model | Output Range | CC Rated Output Current/Voltage/ Duty Cycle | CV-Rated Output Current/Voltage/ Duty Cycle | Generator AC Power (2)(3) | Dimensions H x W x L (mm) | Weight Kg |
|----------------|---|--|---|---|--|-----------|
| Ranger® 250GXT | 160-250A 110-180A 70-130A 50-80A 14-22V 18-28V | AC Constant Current 250A/25V/100% DC Constant Current 250A/25V/100% | DC Constant Voltage (1) 250A/25V/100% | 7,200 Watts Peak 60 Hz Single Phase Two 240V IP66 Receptacles | 759 x 546 x 1073 To top of exhaust tube: 920 | 273 |

LINCOLN®
ELECTRIC

Ranger® 250 GXT

ENGINE SPECIFICATIONS

| Engine Model | Description | Horsepower Displacement | Ignition | Capacities | Operating Speeds | Fuel Consumption |
|---|--|----------------------------|---|--------------------------------------|---|---|
| Kohler OHV (4) Command CH23S (Petrol) | 2 Cylinder, 4 Cycle, OHV Air-Cooled Petrol Engine Aluminium Alloy with Cast Iron Liners Electric Fuel Pump | 23 HP @ 3600 RPM 674 cc | Electric Start 12V Battery 435 Cold Cranking Amps Manual Choke | Fuel - 45 Litres Oil - 1.9 Litres | Full Load 250A DC 3,500 RPM High Idle 3,700 RPM Low Idle 2,400 RPM | 5.7 Ltr/Hr. 2.9 Ltr/Hr 1.5 Ltr/Hr |

(1) DC constant voltage capability provides convenience and added safety when welding in electrically hazardous conditions. (2) When welding, available auxiliary power will be reduced. Output voltage is within +/- 10% at all loads up to rated capacity. (3) Circuits cannot be wired in parallel to operate the same device. (4) Kohler engine warranty is three years.

PERFORMANCE

Arc Performance

- **XTra Performance!** Rated 250 amps/25 volts for AC, DC and CV. All rated outputs at 100% duty cycle at 104°F (40°C).
- **AC/DC welding output** for a broad range of stick electrodes, such as Lincoln Conarc® 49C (AWS E7018) and Fleetweld® 5P+ (AWS E6010). Also capable of MIG, Flux-Cored, and TIG welding.
- **Choose DC(+) for a deep penetrating arc or DC(-) for less penetration** on thin sheet metal. Select AC for general purpose welding and excellent aluminium TIG welding. (Optional equipment required)
- **Simple output range selector** can be used to select one of four amperage ranges with generous overlap for Stick/TIG welding, or two wire feed welding ranges.
- **Fine adjustment control** allows you to dial in just the right welding output for each application.
- **Boost productivity with self-shielded flux-cored CV wire welding.** Compatible with Lincoln Electric LN™-25 PRO wire feeder for use with a variety of wire electrodes.
- **Arc gouge** with up to 4.8 mm carbon electrodes.



AC Generator Performance

- **XTra Power! 7,200 watts continuous AC generator power.** Designed for high capacity needs such as a back-up generator, powering a plasma cutter or an Invertec® inverter welder. Use also for lights, a grinder or other power tools.
- **2 x 240V 15A IP66 outlets.** Standard circuit breakers protect the machine as well as your power tools.
- **Get two tools in one** when you use the Ranger® 250 GXT as a power generator for emergency standby power, and/or for welding.
- **RCD** - for additional protection from electrical shock.
- **Simultaneous welding and AC auxiliary power** — power up to 5,100 watts while welding at 180 amps (AC auxiliary power is reduced when welding simultaneously per table below).

SIMULTANEOUS WELDING & POWER LOADS

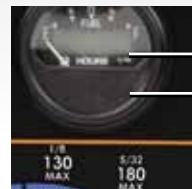
| Welding Output (Amps) | Permissible Power (Watts) |
|-----------------------|---------------------------|
| 0 | 7,200 |
| 80 | 7,200 |
| 130 | 7,200 |
| 180 | 5,100 |
| 250 | 0 |

FEATURES

- **XTra Protection!** Engine door provides machine protection and easy service access.
- **Kohler® Command® 23 HP CH23S OHV Petrol Engine.**
- **Low Noise Ratings**
 - 100.7 dB sound power (Lwa)
 - 76.4 dBA sound level at 7m
- **Remote ready!** 6-pin connector and local/remote switch for remote control operation.
- **45 Litre fuel capacity** allows you to run an extended day.
- **Circuit breaker on the 12V battery circuit** provides added component protection.
- **Convenient truck or trailer** mounting with front and rear holes in base.
- **Electric fuel pump avoids vapour lock.** This assures consistent fuel delivery in locations having a combination of high altitude, warm ambient temperatures, and high anti-pollution additives in petrol.
- **Combination electric fuel gauge and engine hour meter located on control panel** to easily check both fuel level and hour operation. Fuel gauge helps you virtually eliminate running low on fuel during critical



jobs. Hour meter helps plan for scheduled engine maintenance.



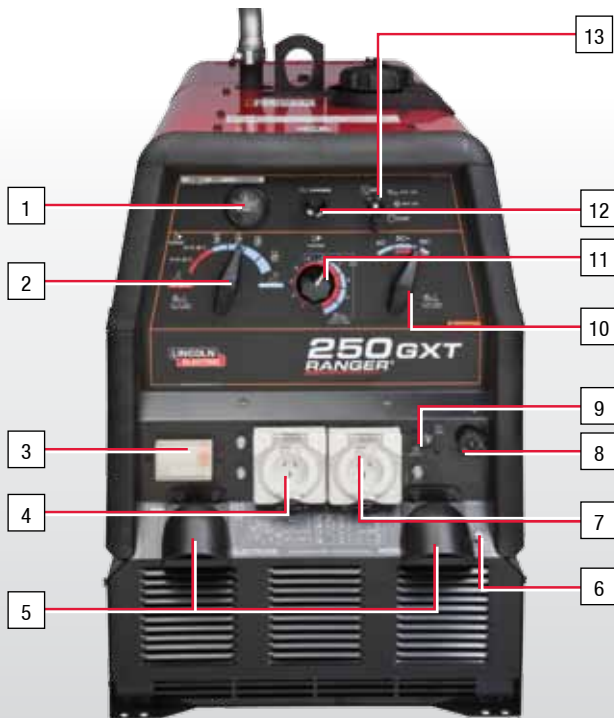
Fuel
Hours

- **Large top fuel filler neck** is easily accessed for refueling.
- **Electric start switch** for easy starts. Switch combines OFF, START, and IDLER functions into one simple, compact, easy-to-use switch.
- **Oil drain valve (no tools required)** with removable extension tube.
- **435 cold cranking amps** with the Group 58 battery for extra starting capacity in sub-zero temperatures.



Ranger® 250 GXT

PERFORMANCE



1. Electric Fuel Gauge and Engine Hour Meter
2. 6 Position Output Range Selector
3. Circuit Breaker/RCD
4. 240 Volt 15 amp outlet
5. Output stud
6. Ground Stud
7. 240 Volt 15 amp outlet
8. 6-Pin Remote Connector
9. Local/Remote Switch
10. Polarity Switch
11. Fine Output Control
12. Engine Choke Control (Stainless Steel Cable)
13. Engine Start Switch and Idler Control

QUALITY AND RELIABILITY

- **Easy maintenance access.** Oil dip stick, filters, spark plugs, etc. are easily accessed with left, right and top engine doors. Left and right doors are removable for service.
- **Adjustable exhaust direction** with top-mounted 360° rotatable exhaust pipe, made from aluminised steel for long life.
- **Red and black powder paint finish offers increased durability** with added protection from rust and corrosion. Also ultraviolet resistant to better retain colour and gloss.
- **Longer engine life, reduced noise emissions and greater fuel economy** with automatic engine idler.
- **Conveniently located engine maintenance label** under top engine door.
- **Automatic engine shutdown protection** for low oil pressure.
- **Reliable start-up** with Group 58 battery with 435 cold cranking amps.
- **Easy access battery cover.**



- **Dependability and long life** aided by all-copper windings in rotor and stator with high quality insulation.
- **Manufactured under a quality system** certified to ISO 9001 requirements.
- **Three-year Lincoln Electric warranty** (parts and labour) on welder. (Engine is warranted separately by the manufacturer.)



Ranger® 250 GXT

RECOMMENDED OPTIONS

STICK OPTIONS

Electrode lead 10m c/w twist-lock holder
Order KA1452-8

Work return lead 9m c/w work clamp
Order KA1452-7

Pigtail c/w lug & female mechconnector
Order KA1452-12

Spark Arrestor Kit
Attaches to muffler exhaust tube. Virtually eliminates spark emissions.

Order K1898-1

Canvas Cover
To protect the engine drive when not in use. Made from attractive red canvas material that is flame retardant, mildew resistant and water repellent.

Order K886-2

All-Terrain Undercarriage
For moving by hand. Overall width 0.7 m. Includes heavy-duty, puncture-resistant (inner tube and sealant) tyres.

Order K1737-1

Cable Carrier Kit
Holds up to two 30.5 m. lengths of #2/0 or smaller cable. Includes holder tray for electrodes or miscellaneous items. For use with K1737-1.

Order K1739-1

WIRE FEEDER OPTIONS

LN™-25 PRO Wire Feeder

Portable CC/CV unit for flux-cored and MIG welding with MAXTRAC® wire drive system. Includes gas solenoid and internal contactor.

Order K2613-5A1 inc bonus K126 PRO gun
K2613-5A2 inc bonus Magnum® 400 gun

Magnum® 350 Innershield® Gun (for LN-25 PRO)
For self-shielded wire with 4.5 m cable. For 1.6-2.4 mm wire.

Order K126 -12

Invertec® PC210
Cuts up to 10mm using the 240V AC generator power from the Ranger® 250GXT.

Order K12038-2

Remote Control Kit

Consists of a control box with choice of two cable lengths. Permits remote adjustment of output.

Order K857 for 7.6 m

Order K857-1 for 30 m

TIG OPTIONS

Powercraft™ PC26G

Air-Cooled 200 amp torch (2 piece separate power conductor and a braided gas hose).

Order PC26FV-8I

TIG Module

Portable, high frequency unit with gas valve for TIG welding. Rated at 300 amps/60% duty cycle. (Requires 240V/115V step down transformer to be fitted by field service shop).

Order K930-2

Control Cable

Connects TIG module to power source. Comes with 9- pin TIG Module connector and power source 6- pin connector and 120V plug

Order K936-3

Drive Roll and Guide Tube Kit (for LN-25 PRO)

For cored or solid steel wire.

Order KP1697-068 for 1.8 mm

Order KP1697-5/64 for 2.0 mm

POWER MIG® 180C

Premium, compact wire welder with continuous voltage control for MIG and flux-cored welding. 30 to 180 amp output range. Add the K2532-1 Magnum® 100SG Spool Gun for aluminum MIG welding.

Order K2668-1

Magnum® 100SG Spool Gun

Designed to easily feed 102 mm diameter 0.45 kg spools of 0.8 mm or 0.9 mm diameter SuperGlaze® aluminum MIG wire. Includes gun, adapter kit, 0.9 mm contact tips (qty. 3), gas nozzle, and a 0.45 kg spool of SuperGlaze® 4043 0.9 mm MIG wire. Packaged in a convenient carrying case.

Order K2532-1

CUSTOMER ASSISTANCE POLICY

The business of The Lincoln Electric Company is manufacturing and selling high quality welding equipment, consumables, and cutting equipment. Our challenge is to meet the needs of our customers and to exceed their expectations. On occasion, purchasers may ask Lincoln Electric for advice or information about their use of our products. We respond to our customers based on the best information in our possession at that time. Lincoln Electric is not in a position to warrant or guarantee such advice, and assumes no liability, with respect to such information or advice. We expressly disclaim any warranty of any kind, including any warranty of fitness for any customer's particular purpose, with respect to such information or advice. As a matter of practical consideration, we also cannot assume any responsibility for updating or correcting any such information or advice once it has been given, nor does the provision of information or advice create, expand or alter any warranty with respect to the sale of our products. Lincoln Electric is a responsive manufacturer, but the selection and use of specific products sold by Lincoln Electric is solely within the control of, and remains the sole responsibility of the customer. Many variables beyond the control of Lincoln Electric affect the results obtained in applying these types of fabrication methods and service requirements.

Subject to Change - This information is accurate to the best of our knowledge at the time of printing.

ABN 21 060 672 979

TOOWOOMBA WELDING SUPPLIES

Ph: 07 4659 0044
500 Boundary Street, Toowoomba QLD 4350
E: sales@tweld.com.au | www.tweld.com.au

We deliver on time ... EVERYTIME

We are an Australian locally owned family business



Toowoomba Welding Supplies : www.tweld.com.au : Ph +61 7 4659 0044